



BlueTongue
H O M E S



Tasman 23 212m²

**3
Bed**

**3
Bath**

**2
Car**

General:

Standard site costs M class slab.
Allowance of 1m fall over block.
Concrete roof tiles from the Builder's Range.
Face brick finish from the Builder's Range.
25 Degree roof pitch.
Wall & Ceiling Insulation
Panel lift garage door to front.
Feature awning windows to front façade.

Internal:

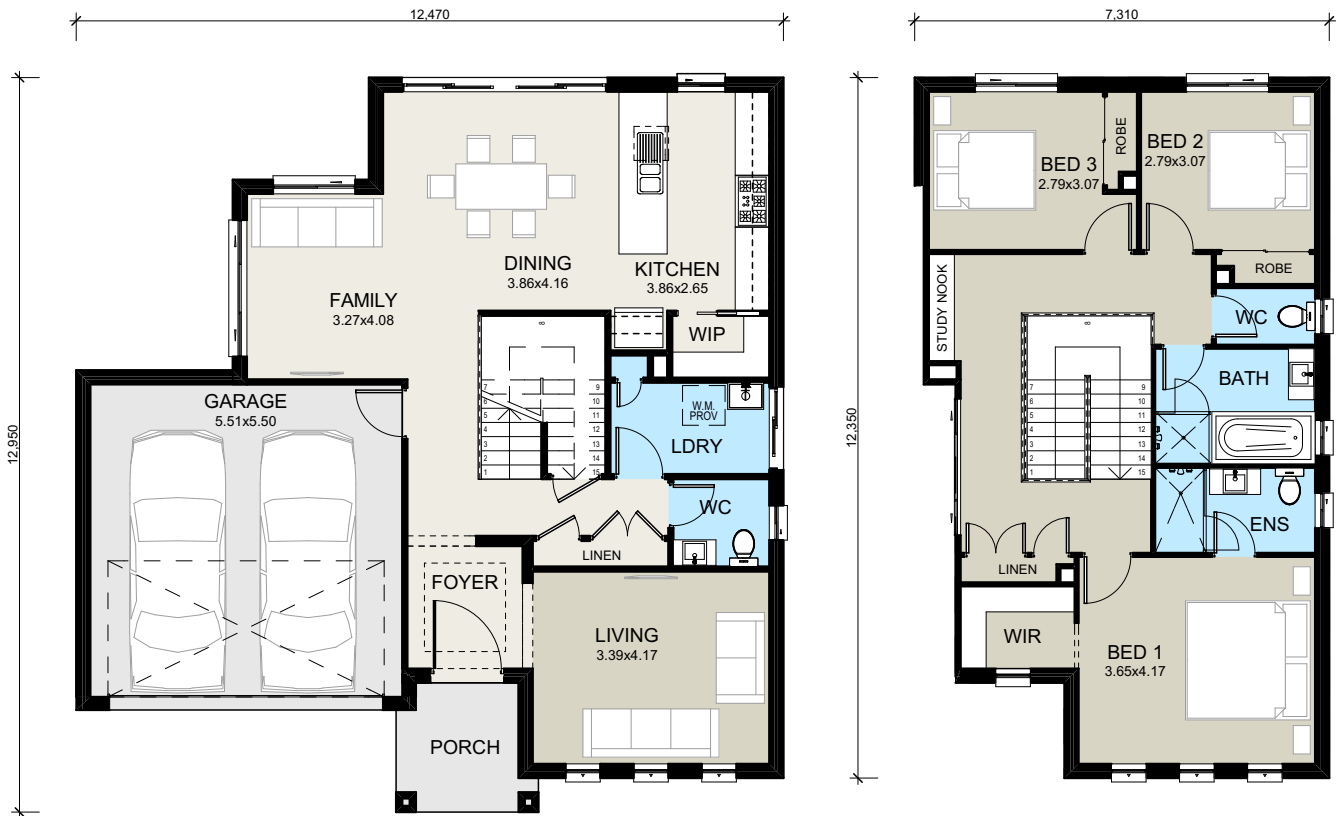
Full laminated kitchen including overhead cupboards.
DeLonghi stainless steel appliances including electric wall oven, gas cook-top and rangehood.
1 ½ stainless steel Blanco kitchen sink and flickmixer.
Chrome floor waste to wet areas.
Designer door furniture inc. lever style handles.
Quality door stops & magnetic latching.
Quality Caroma tapware & accessories.

**Visit our display homes located at
30-34 Village Circuit, Gregory Hills &
24-26 Clement Road, Edmondson Park
Ph. (02) 8729 6060**

Disclaimer:

Room sizes shown are approximate only. Please refer to final working drawings for actual sizes. Plans are protected by copyright. Prices, inclusions and plans are subject to variation without notice. Display/show home designs and inclusions vary and are provided as a guide only. Please refer to your building contract for the specific design and inclusion details of your new home. Photos shown are for illustrative purposes only. Conditions apply. Contact us for all information regarding the inclusions. Subject to site classification and council and other regulatory requirements / approvals.

Tasman 23



Disclaimer:

Room sizes shown are approximate only. Please refer to final working drawings for actual sizes. Plans are protected by copyright. Prices, inclusions and plans are subject to variation without notice. Display/show home designs and inclusions vary and are provided as a guide only. Please refer to your building contract for the specific design and inclusion details of your new home. Photos shown are for illustrative purposes only. Conditions apply. Contact us for all information regarding the inclusions. Subject to site classification and council and other regulatory requirements / approvals.