

# The Kimberley<sup>287</sup>

Double Storey—Modern Façade

SIMONE  
QUALITY . DESIGN . TRUST HOMES



5



3



2



# The Kimberley <sup>287</sup>

## Double Storey

The Kimberley is perfect for large families looking for lots of living space. With 5 bedrooms and four different living spaces, this home has lots of space to move around but can still fit on blocks as narrow and 12.5m.

### Home Dimensions

Total home width: 11.30 m

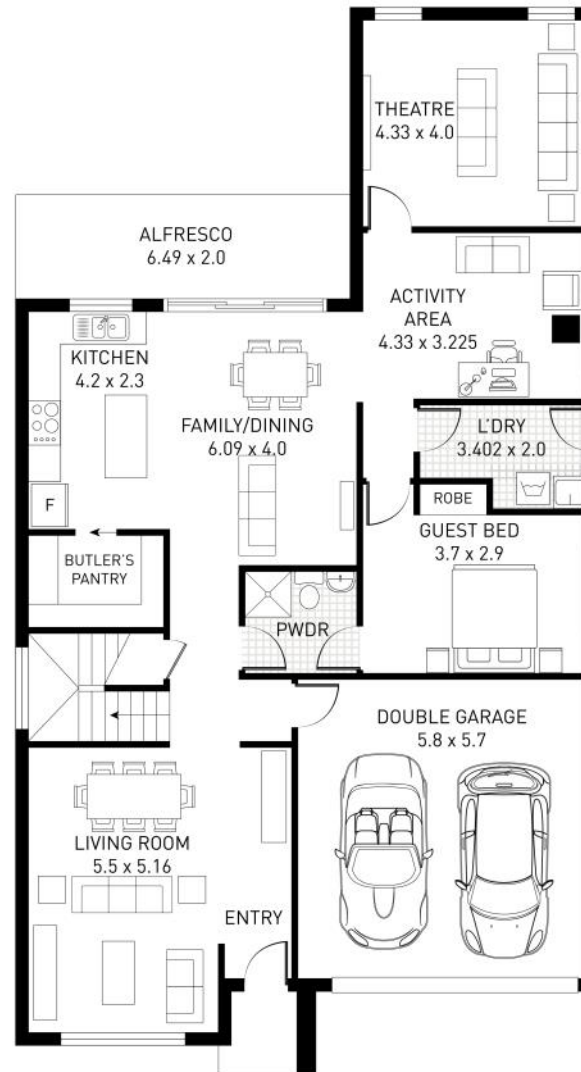
Total home depth: 20.46m

### Key Features:

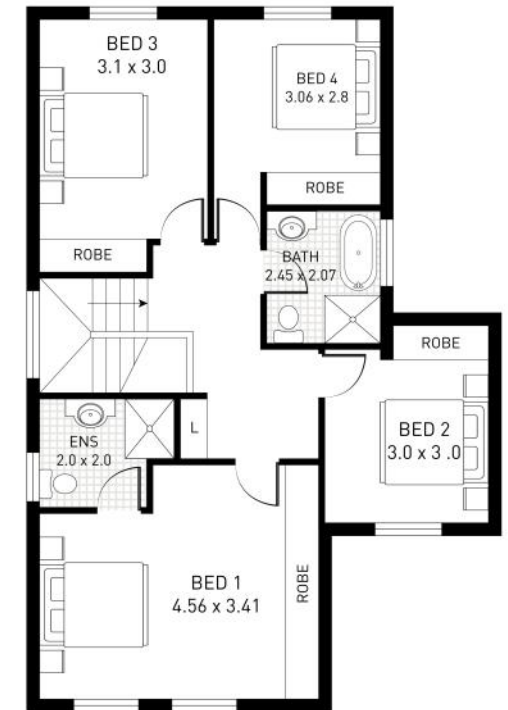
- 5 Bedrooms
- 3 Bathrooms
- 2 Car Garage
- Theatre
- Alfresco

### Dimensions

Ground Floor	146.85 Sqm
First Floor	88.63 Sqm
Garage	34.67 Sqm
Alfresco	12.98 Sqm
Patio	4.04 Sqm
Total Area	287.17 Sqm (31 Sq's)



**GROUND FLOOR**



**FIRST FLOOR**

- ☎ 02 4647 2122
- @ info@simonehomes.com.au
- 📶 simonehomes.com.au
- ✉ PO BOX 811, Narellan NSW 2567