

The Fraser²⁴⁷

Double Storey—Modern Façade

SIMONE
QUALITY · DESIGN · TRUST HOMES



4  2  2 

The Fraser ²⁴⁷

Double Storey

This modern double storey home is perfect for established families looking to live in style. With living spaces on both floors, this home allows the perfect balance of family and personal time. This home is designed to suit narrow blocks.

Home Dimensions

Total home width: 7.93 m

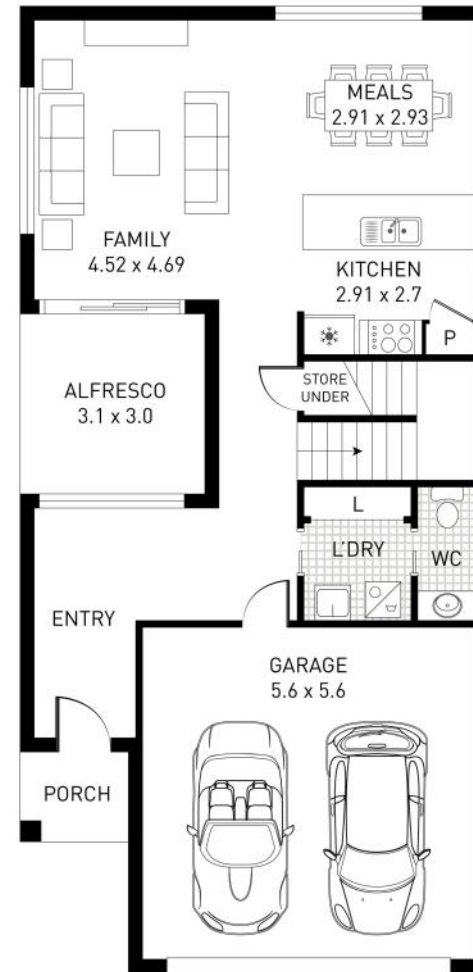
Total home depth: 16.25 m

Key Features:

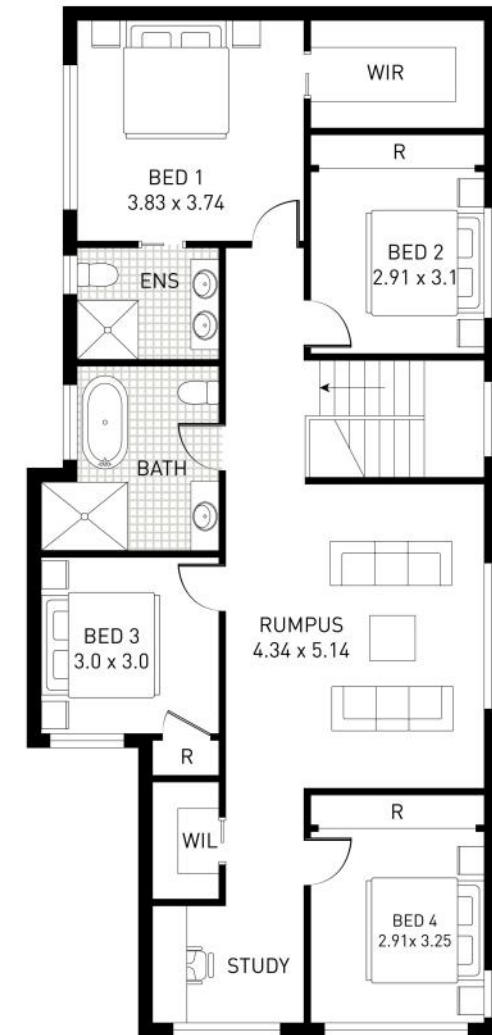
- 4 Bedrooms
- 2 1/2 Bathrooms
- 2 Car Garage
- Study
- Upstairs Rumpus
- Alfresco

Dimensions

Ground Floor	77.74 Sqm
First Floor	122.30 Sqm
Garage	35.06 Sqm
Alfresco	9.30 Sqm
Porch	2.75 Sqm
Total Area	247.15 Sqm (26.60 Sq's)



LOWER LEVEL



UPPER LEVEL

☎ 02 4647 2122

@ info@simonehomes.com.au

📶 simonehomes.com.au

✉ PO BOX 811, Narellan NSW 2567