




The Fraser ²¹⁶

Double Storey—Classic MK2 Façade

SIMONE
QUALITY · DESIGN · TRUST HOMES



4  2  1 

The Fraser ²¹⁶

Double Storey

This stylish two storey home is perfectly designed to fit on narrow lots without compromising on space. Designed with the family in mind this home features all the comforts of modern living.

Home Dimensions

Total home width: 7.93 m

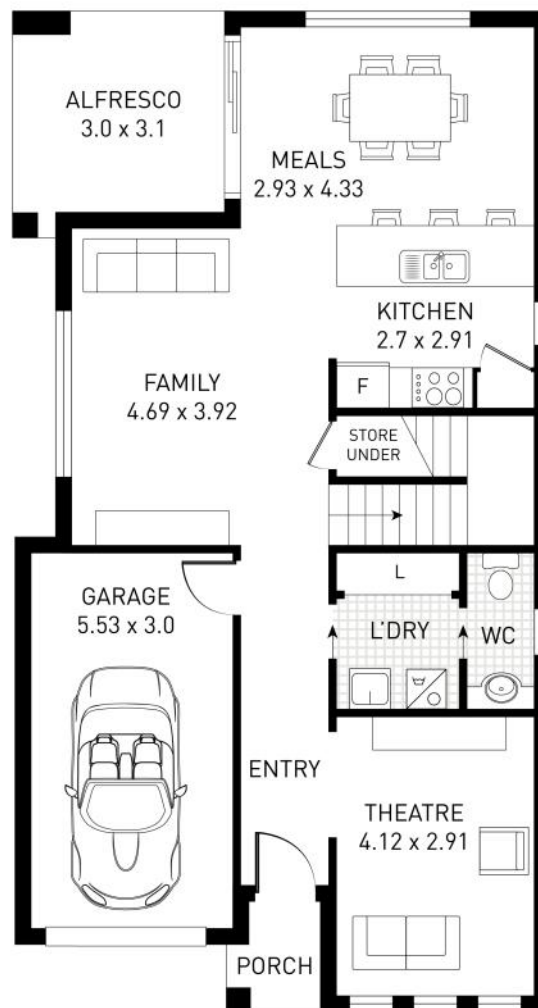
Total home depth: 14.79 m

Key Features:

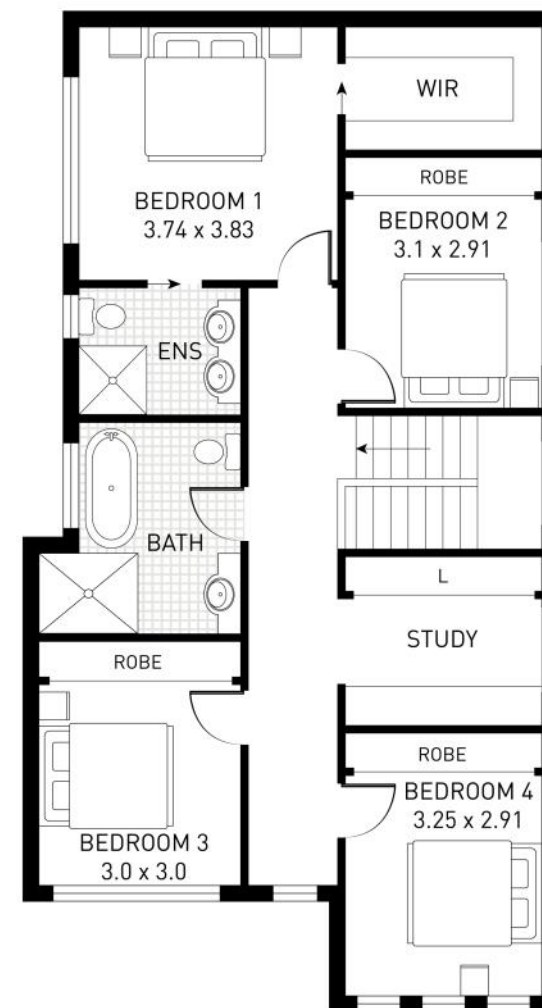
- 4 Bedrooms
- 2 Bathrooms
- 1 Car Garage
- Study
- Theatre
- Alfresco

Dimensions

Ground Floor	80.88 Sqm
First Floor	104.82 Sqm
Garage	19.08 Sqm
Alfresco	9.51 Sqm
Balcony	2.00 Sqm
Total Area	216.29 Sqm (23.28 Sq's)



GROUND FLOOR



FIRST FLOOR

- ☎ 02 4647 2122
- @ info@simonehomes.com.au
- 📶 simonehomes.com.au
- ✉ PO BOX 811, Narellan NSW 2567