

Hawthorn Prestige.



**Allow yourself to imagine the lifestyle
you've always wanted, in the home you
deserve!**

The double-storey Hawthorn 471 is a sure sign that your family is moving up in the world.

The lower level features a range of spacious living zones, including an ensuited guest bedroom, separate media and games rooms, and a huge central kitchen with L-shaped breakfast bar, butler's pantry and adjacent alfresco.

A designer staircase with a large void leads to the upper level, which includes an entertainer's lounge with built-in bar. The master suite has its own balcony, while the remaining four bedrooms form the ideal kids' retreat.

The Hawthorn - Prestige offers individually crafted facades that will inspire you by providing a choice of homes that reflect your personal lifestyle and preferences.

Call **132 789**
or visit **gjgardner.com.au**

Welcome **home.**

G.J. Gardner. HOMES

Hawthorn facade options.

G.J. Gardner's tailored facades give you the opportunity to personalise your home. With Executive, Resort, Manor and Urban facades to choose from, you can bring your home to life, making it as individual as you are!

EXECUTIVE



RESORT



MANOR



URBAN



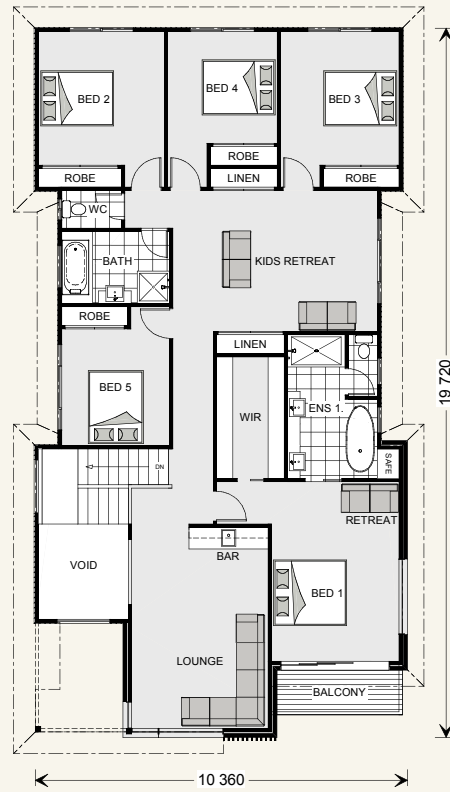
Images may depict fixtures, finishes and features not supplied by G.J. Gardner Homes. These items include planter boxes, retaining walls, water features, pergolas, screens and decorative landscaping items such as fencing and outdoor kitchens and barbecues.

Hawthorn 471.



FEATURES

- + Spacious, two-storey family home
- + Entertainer's lounge with built-in bar
- + Media and games rooms, home office
- + Upstairs retreat



SPECIFICATIONS

Floor Area-Ground

Living: 201.0 sqm

Garage: 37.9 sqm

Alfresco: 35.9 sqm

Porch: 7.4 sqm

Patio: 5.1 sqm

Total: 287.3 sqm

Width: 16.300 m

Length: 19.870 m

Floor Area-Upper

Living: 165.5 sqm

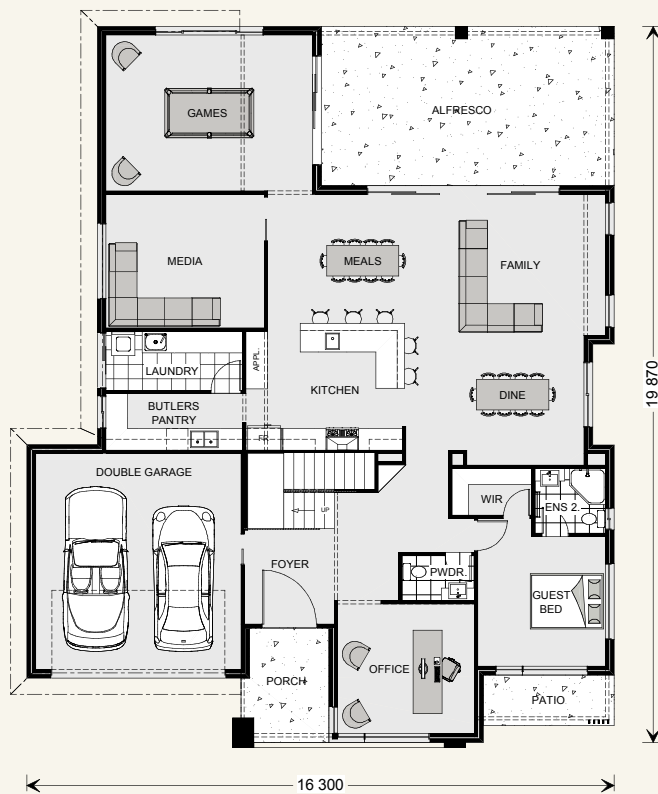
Balcony: 4.4 sqm

Void: 13.7 sqm

Total: 183.6 sqm

Total Area

Total: 470.9 sqm



NOTES

**Locals always
at hand.**

Designing and building your ideal home is an exciting experience, and when you partner with professional and established builders – G.J. Gardner Homes, the journey will be fulfilling and rewarding.



Internal photographs are from different G.J. Gardner Homes to those featured in this brochure.

Call **132 789**
or visit **gjjardner.com.au**

G.J. Gardner. **HOMES**