

# Kensington.



**Allow yourself to imagine the lifestyle you've always wanted, in the home you deserve!**

You've found it! Kensington Designs, exclusive to G.J. Gardner Homes, with its flowing interior spaces and sublime connections to the outdoors, redefines family living.

An upstairs retreat provides a perfect separation of family and personal spaces. The large master bedroom, with its huge walk-in robe and ensuite, has been created for privacy, it is a place to relax and re-energise.

Designed to fit from wider to narrower sites, the Kensington's double garage can also be built as a single, making it perfect for urban blocks. Unparalleled flexibility, the Kensington is King for all size blocks.

The Kensington Designs offer individually crafted facades that will inspire you by providing a choice of homes that reflect your personal lifestyle and preferences.

Contact us on **132 789**  
or visit **[gjjardner.com.au](http://gjjardner.com.au)**

Welcome **home.**

**G.J. Gardner.** **HOMES**

## Kensington facade options.

G.J. Gardner's tailored facades give you the opportunity to personalise your home. With Executive, Classic, Resort, Urban, Traditional and Beach facades to choose from, you can bring your home to life, making it as individual as you are!



Images may depict fixtures, finishes and features not supplied by G.J. Gardner Homes. These items include planter boxes, retaining walls, water features, pergolas, screens and decorative landscaping items such as fencing and outdoor kitchens and barbecues.

## CLASSIC



## With you every step of the way.

Partner with G.J. Gardner Homes, and together we'll transform your ideas into reality. Let us guide you through the entire home building process. With our local knowledge and insights coupled with access to your area's local architects, tradesmen and homebuilders, you know you'll be completely looked after by G.J. Gardner Homes.

## URBAN



No two houses ever need to be the same. We have 24 flexible home designs to choose from, so your fully customised home reflects your family's unique lifestyle and budget.

## BEACH

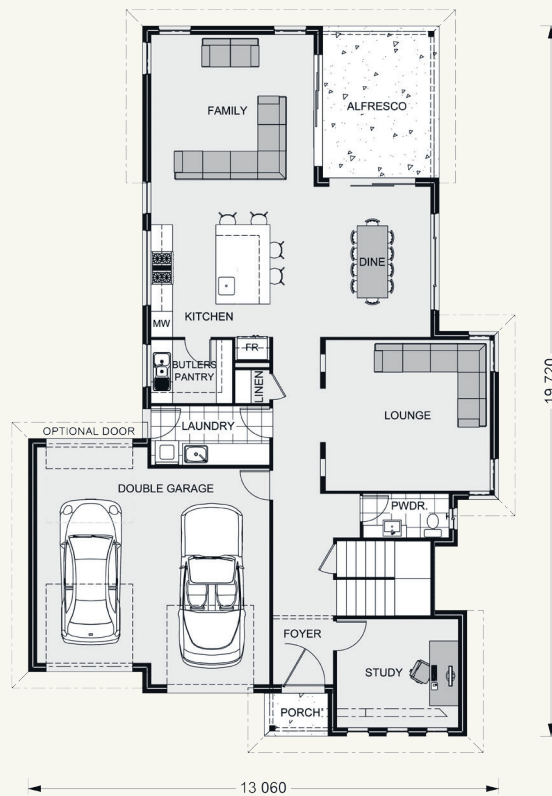
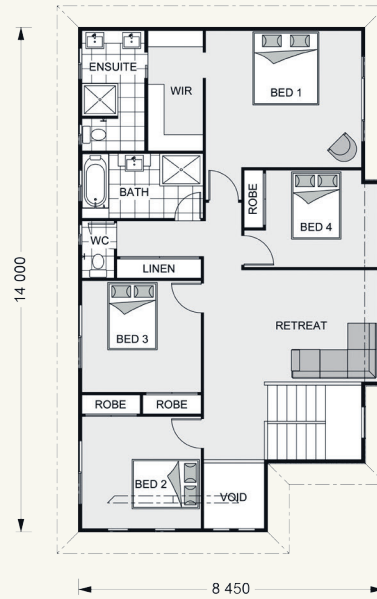


## Kensington 299.



### FEATURES

- + Large study
- + Butler's pantry
- + Retreat
- + Large walk-in robe



### SPECIFICATIONS

#### Floor Area-Ground

- Living:** 131.3 sqm
- Garage:** 42.7 sqm
- Alfresco:** 13.7 sqm
- Porch:** 2.1 sqm
- Total:** 189.8 sqm
- Width:** 13.060 m
- Length:** 19.720 m

#### Floor Area-Upper

- Living:** 105.5 sqm
- Void:** 3.4 sqm
- Total:** 108.9 sqm

#### Total Area

- Total:** 298.7 sqm

### NOTES

---



---



---



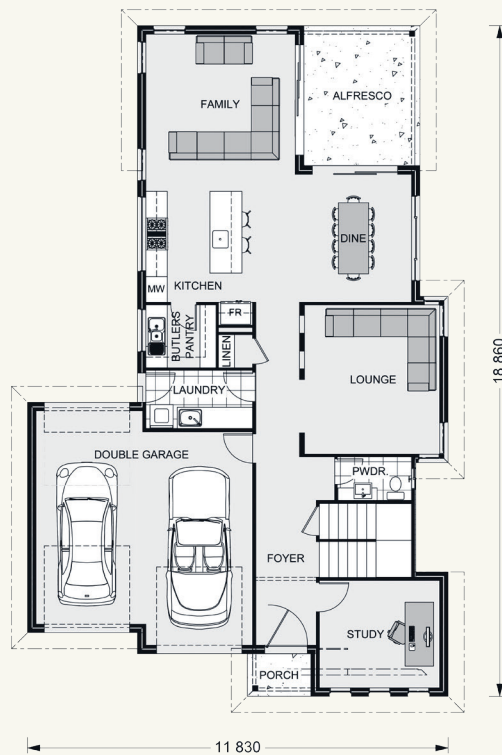
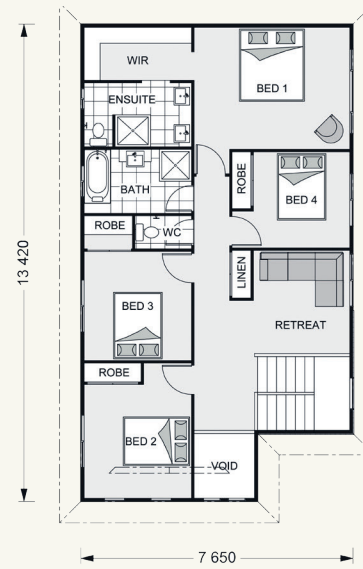
---

## Kensington 276.

4  2.5  2 

### FEATURES

- + Lounge & family room
- + Spacious ensuite
- + Butler's pantry
- + Lifestyle alfresco



### SPECIFICATIONS

#### Floor Area-Ground

- Living:** 116.9 sqm  
**Garage:** 40.4 sqm  
**Alfresco:** 12.9 sqm  
**Porch:** 2.1 sqm  
**Total:** 172.3 sqm  
**Width:** 11.830 m  
**Length:** 18.860 m

#### Floor Area-Upper

- Living:** 94.1 sqm  
**Void:** 3.4 sqm  
**Total:** 97.5 sqm

#### Total Area

- Total:** 269.8 sqm

The facades shown on this brochure are not representations of this floor plan.

### NOTES

---



---



---



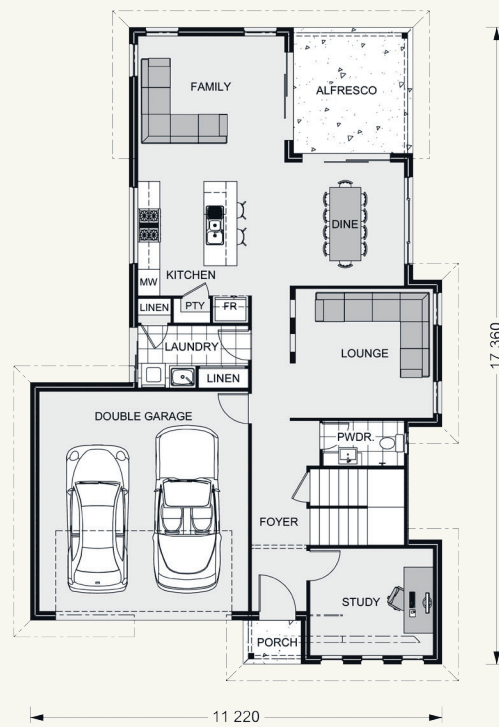
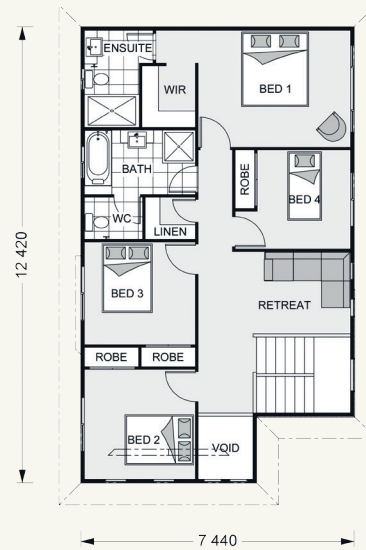
---

## Kensington 241.



### FEATURES

- + Retreat
- + Walk-in robe
- + Powder room
- + Lounge & family room



### SPECIFICATIONS

#### Floor Area-Ground

- Living:** 102.7 sqm
- Garage:** 37.7 sqm
- Alfresco:** 11.2 sqm
- Porch:** 1.9 sqm
- Total:** 153.5 sqm
- Width:** 11.220 m
- Length:** 17.360 m

#### Floor Area-Upper

- Living:** 84.7 sqm
- Void:** 2.9 sqm
- Total:** 87.6 sqm

#### Total Area

- Total:** 241.1 sqm

The facades shown on this brochure are not representations of this floor plan.

### NOTES

---



---



---



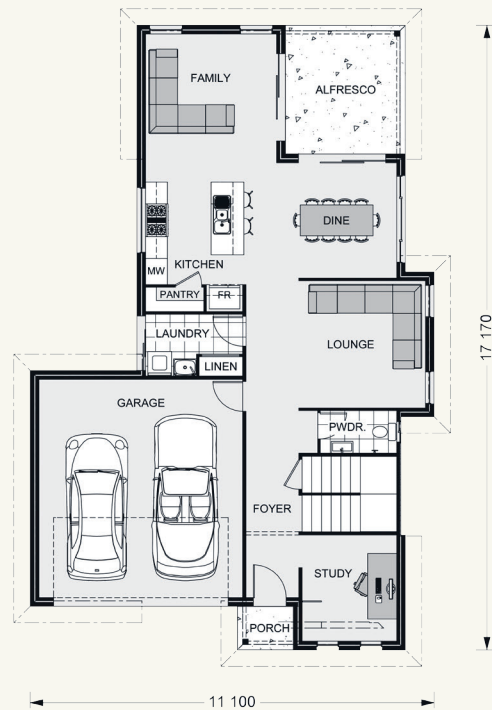
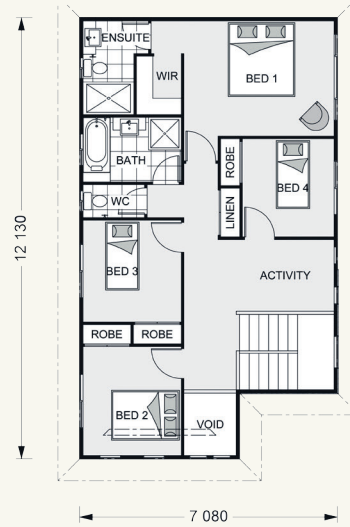
---

## Kensington 226.

4  2.5  2 

### FEATURES

- + Ensuite
- + Activity room
- + Lifestyle alfresco
- + Lounge & family room



### SPECIFICATIONS

#### Floor Area-Ground

**Living:** 94.4 sqm  
**Garage:** 37.1 sqm  
**Alfresco:** 11.7 sqm  
**Porch:** 1.8 sqm  
**Total:** 145.0 sqm  
**Width:** 11.100 m  
**Length:** 17.170 m

#### Floor Area-Upper

**Living:** 78.2 sqm  
**Void:** 2.8 sqm  
**Total:** 81.0 sqm

#### Total Area

**Total:** 226.0 sqm

The facades shown on this brochure are not representations of this floor plan.

### NOTES

---



---



---



---

---

**Locals always  
at hand.**

Designing and building your ideal home is an exciting experience, and when you partner with professional and established builders – G.J. Gardner Homes, the journey will be fulfilling and rewarding.



Internal photographs are from different G.J. Gardner Homes to those featured in this brochure.

Contact us on **132 789**  
or visit [gjjardner.com.au](http://gjjardner.com.au)

**G.J. Gardner.** **HOMES**