

The Northside.



Your trusted local builder.
Call 132 789 or visit gjgardner.com.au



Locally Owned



Australia's Best National Home Builder on Product Review



Fixed Price Contracts



Facts Up Front

BEACH



CLASSIC



HAMPTONS



A home that offers enough space for your family to grow and friends to visit, relax and enjoy is exactly what you'll be offered with the Northside range.

Keeping all bedrooms to the rear and living zones to the front, while centralising a large, modern kitchen with an included butlers pantry, will make entertaining a breeze. The open, spacious layout with two separate living zones, that both open up to a huge undercover alfresco and courtyard, adds to the elegant spatial flow of the home.




These beautiful designs also offer up to four large bedrooms, including a master escape, equipped with large, well-appointed ensuite and walk in robe. The Northside designs are liveable, practical and perfectly thought-out.



Key Features:

- + Two separate, spacious and open living/ dining areas, for privacy and room for a growing family.
- + Modern kitchen with butler's pantry is set in the heart of the home for easy entertaining.
- + Outdoor living is encouraged with a large, undercover alfresco area accessible from both living areas.
- + Master offers a complete escape, spaciouly designed with a WIR and ensuite.

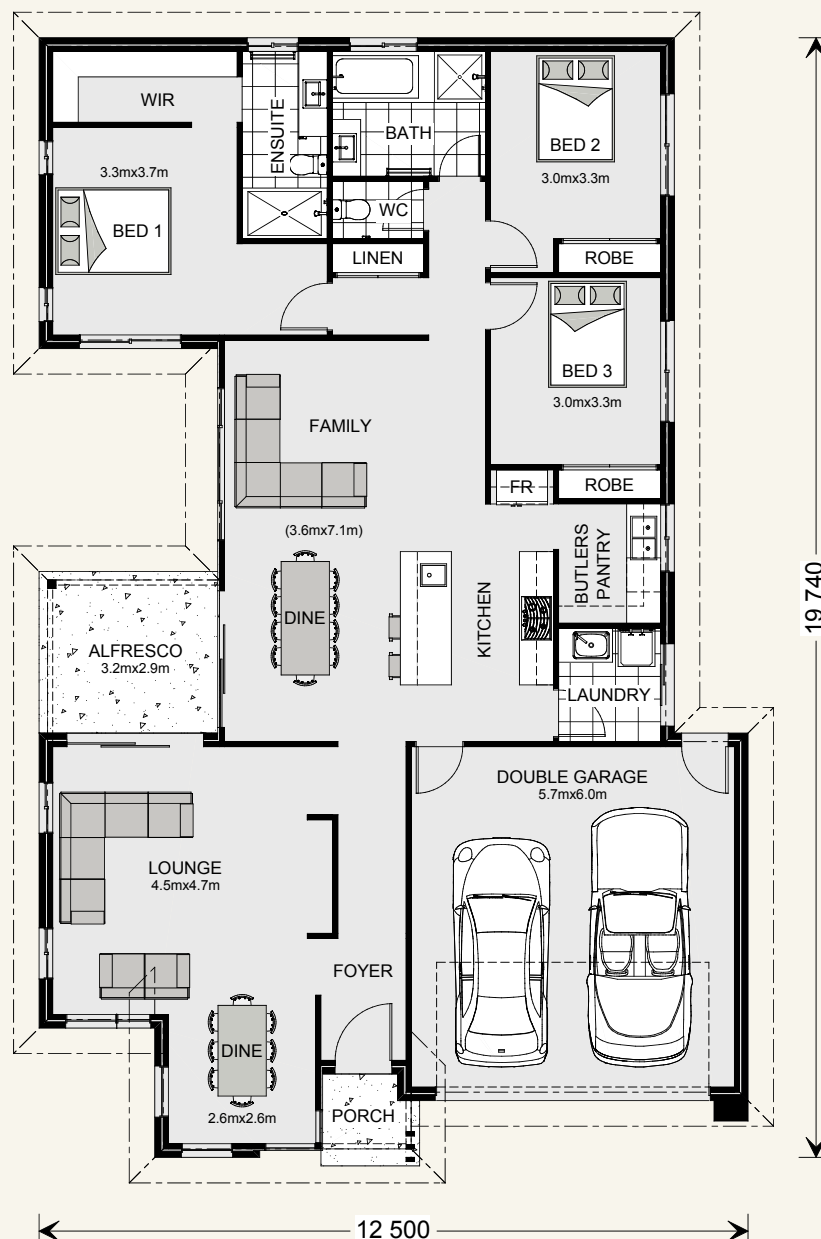
Northside 208.

3  2  2 
 Suits standard lot width: 14m +

Floor sizes - Resort Façade

Living: 159.0 m²
 Garage: 37.5 m²

Alfresco: 9.1 m²
 Porch: 2.6 m²
Total: 208.2 m²



Northside 229.



Suits standard lot width:

14m +

Floor sizes - Resort Façade

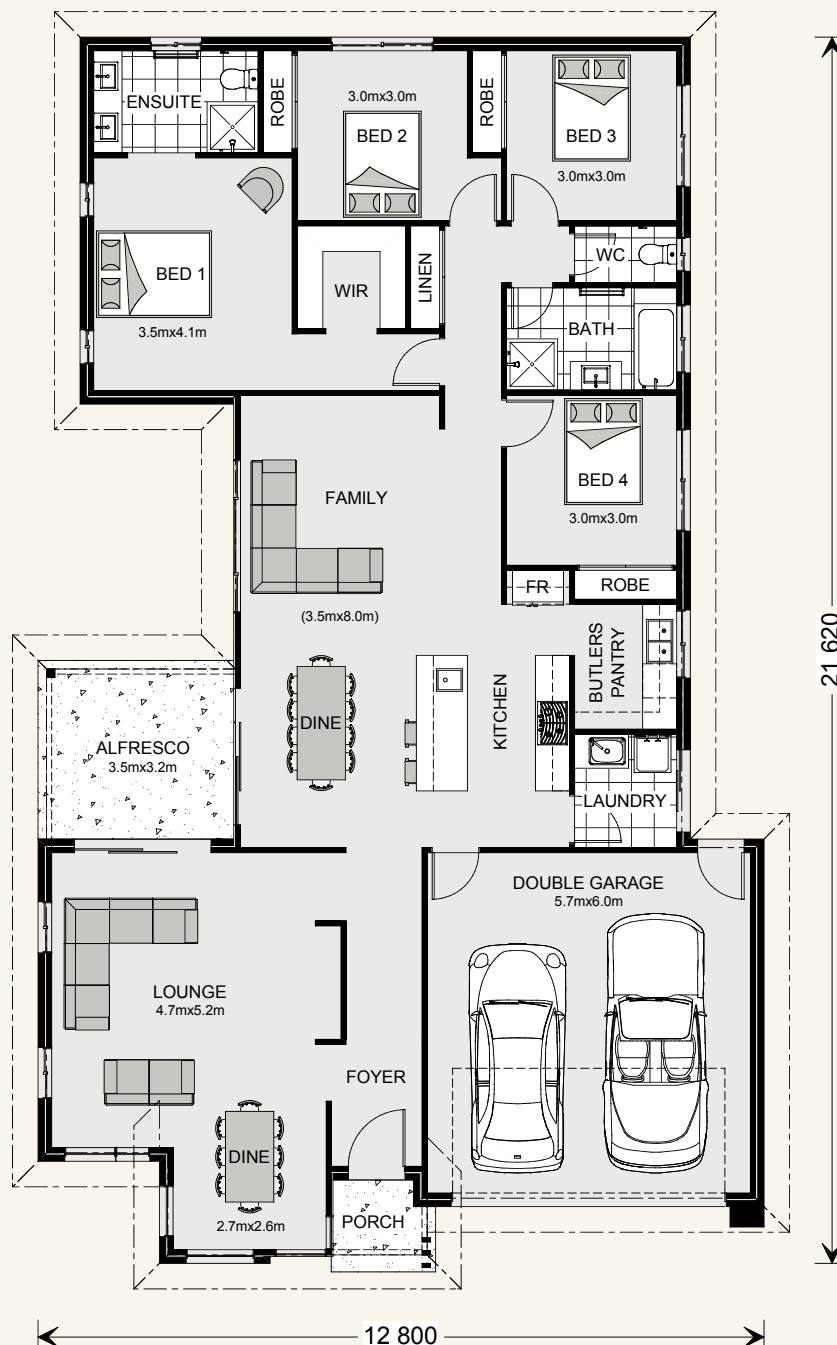
Living: 177.2 m²

Garage: 37.5 m²

Alfresco: 11.0 m²

Porch: 2.8 m²

Total: 228.5 m²



Northside 252.

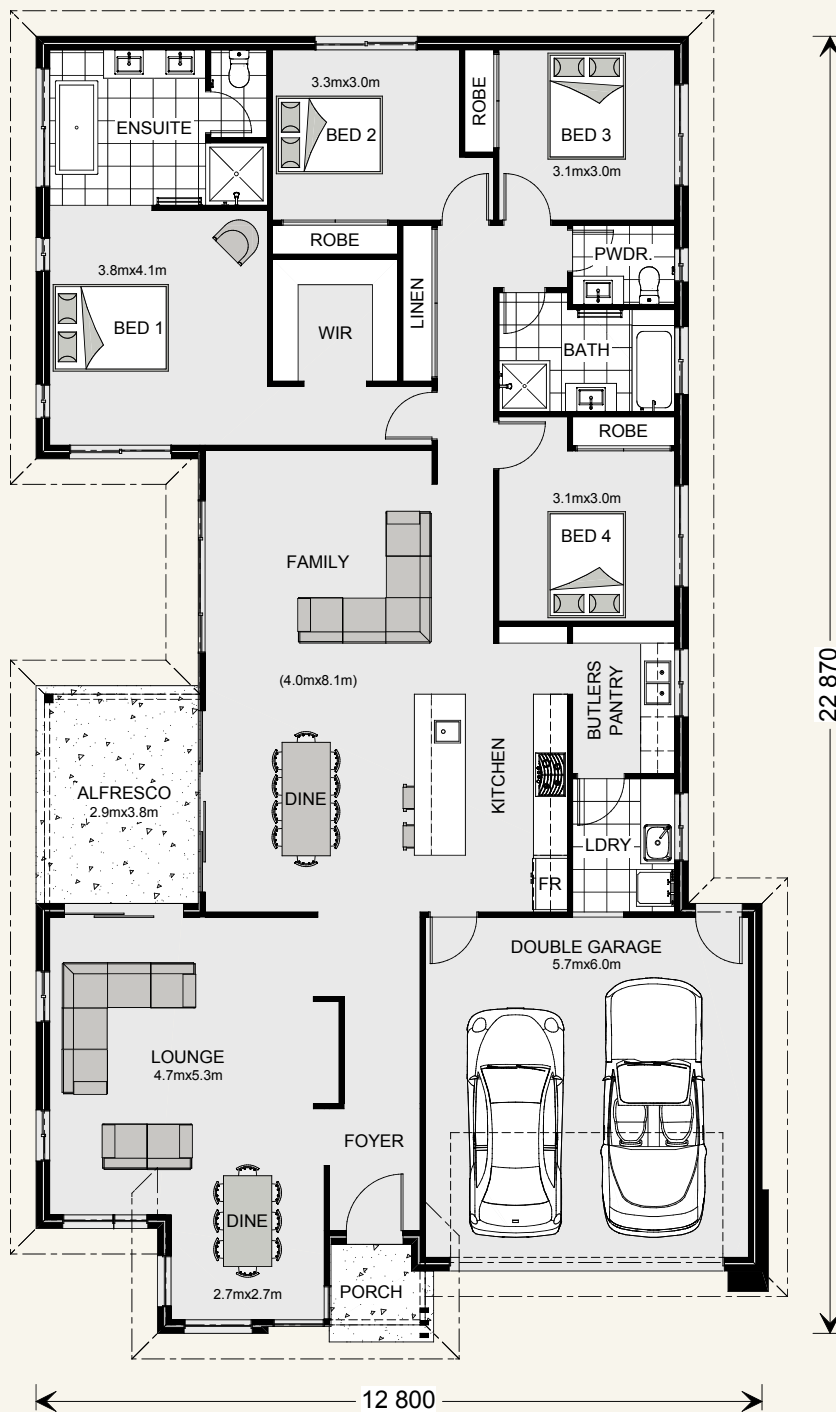


Suits standard lot width: 14m +

Floor sizes - Resort Façade

Living: 199.9 m²
Garage: 37.5 m²

Alfresco: 11.1 m²
Porch: 3.0 m²
Total: 251.5 m²



Northside 273.

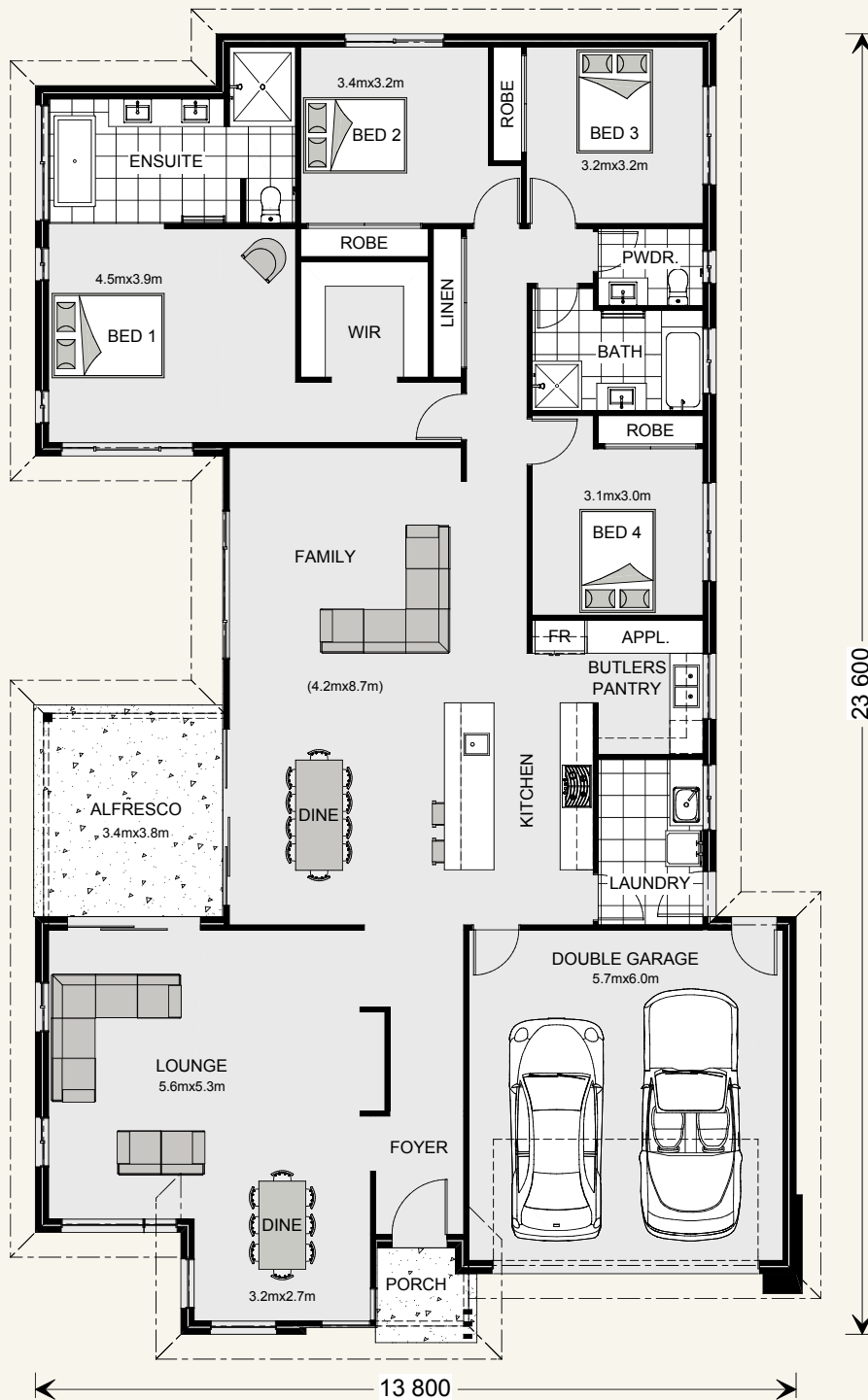


Suits standard lot width: 15m +

Floor sizes - Resort Façade

Living: 219.4 m²
Garage: 37.5 m²

Alfresco: 13.2 m²
Porch: 3.0 m²
Total: 273.1 m²



Get in touch with an award-winning local builder today!

 132 789

 gjgardner.com.au



— WINNER —

**Australia's Best
National Home Builder
2016 and 2017**

PRODUCT  REVIEW
.COM.AU



*Based upon Australia Major Builder reviews received on productreview.com.au from 1 January 2016 – 30 November 2017. Images may depict fixtures, finishes and features not supplied by G.J. Gardner Homes. These items include planter boxes, retaining walls, water features, pergolas, screens and decorative landscaping items such as fencing and outdoor kitchens and barbecues.

Get in touch today!

Call 132 789 or visit gjgardner.com.au

G.J. Gardner. HOMES