

Coolum.



Allow yourself to imagine the lifestyle you've always wanted, in the home you deserve!

Are you looking for a new home which combines clever designs, flawless features and is both elegant and easy to live in?

The Coolum range, exclusive to G.J. Gardner Homes, has been created with the needs of every family member in mind, resulting in spaces which are so abundant, any room will be a joy to live in.

These beautiful homes, with separate dining areas, open plan family rooms, activity and media rooms will perfectly meet the requirements of your growing and changing family and give unparalleled flexibility for both group and personal retreats. Liveable and luxurious, the Coolum Designs are an ingenious solution to the needs of today's families.

Coolum Designs offer individually crafted facades that will inspire you by providing a choice of homes that reflect your personal lifestyle and preferences.

Welcome **home.**

G.J. Gardner. HOMES

Coolum facade options.

G.J. Gardner's tailored facades give you the opportunity to personalise your home. With Executive, Classic, Resort, Urban, Traditional and Beach facades to choose from, you can bring your home to life, making it as individual as you are!



Images may depict fixtures, finishes and features not supplied by G.J. Gardner Homes. These items include planter boxes, retaining walls, water features, pergolas, screens and decorative landscaping items such as fencing and outdoor kitchens and barbecues.

CLASSIC



**With you every
step of the way.**

Partner with G.J. Gardner Homes, and together we'll transform your ideas into reality. Let us guide you through the entire home building process. With our local knowledge and insights coupled with access to your area's local architects, tradesmen and homebuilders, you know you'll be completely looked after by G.J. Gardner Homes.

URBAN



No two houses ever need to be the same. We have 24 flexible home designs to choose from, so your fully customised home reflects your family's unique lifestyle and budget.

BEACH

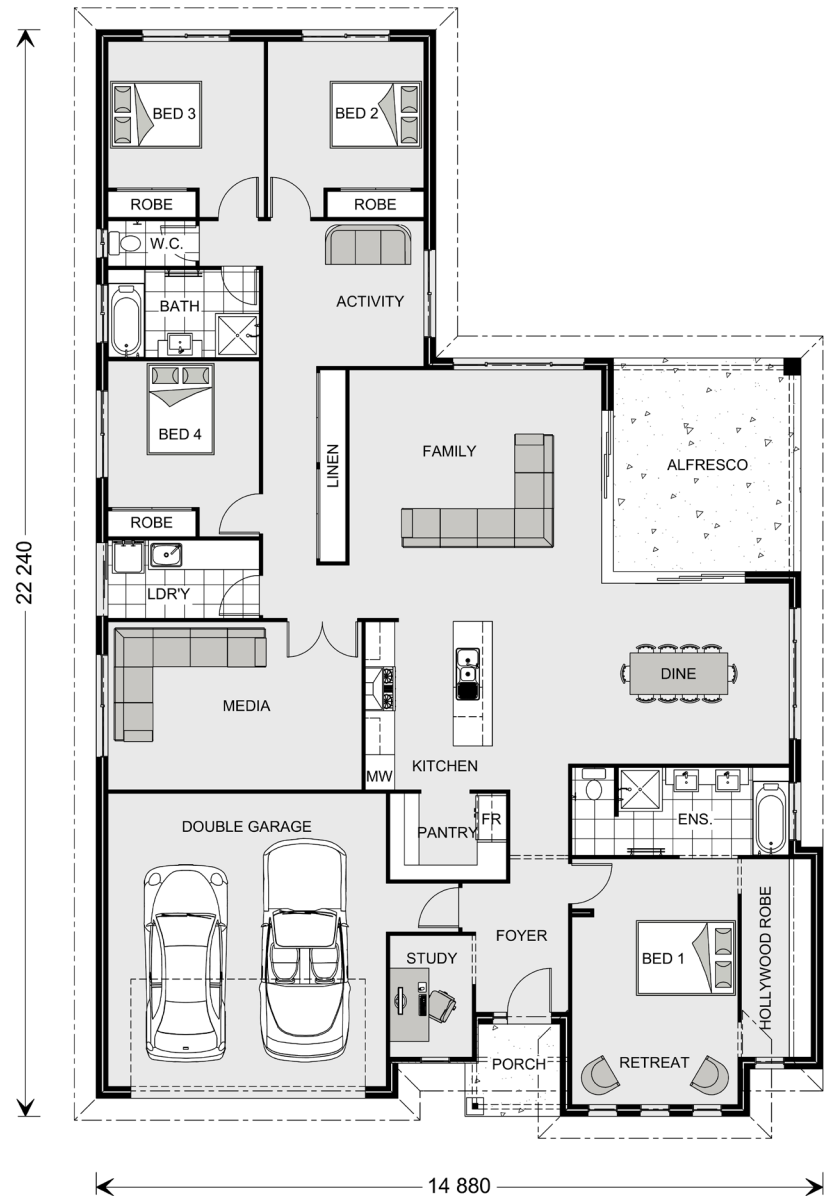


Coolum 268.



FEATURES

- + Hollywood robe
- + Spacious walk-in pantry
- + Media room
- + Large ensuite



SPECIFICATIONS

- Living:** 208.9 sqm
- Garage:** 38.7 sqm
- Alfresco:** 16.8 sqm
- Porch:** 3.5 sqm
- Total:** 267.9 sqm

TOTAL AREA

- Width:** 14.880 m
- Length:** 22.240 m

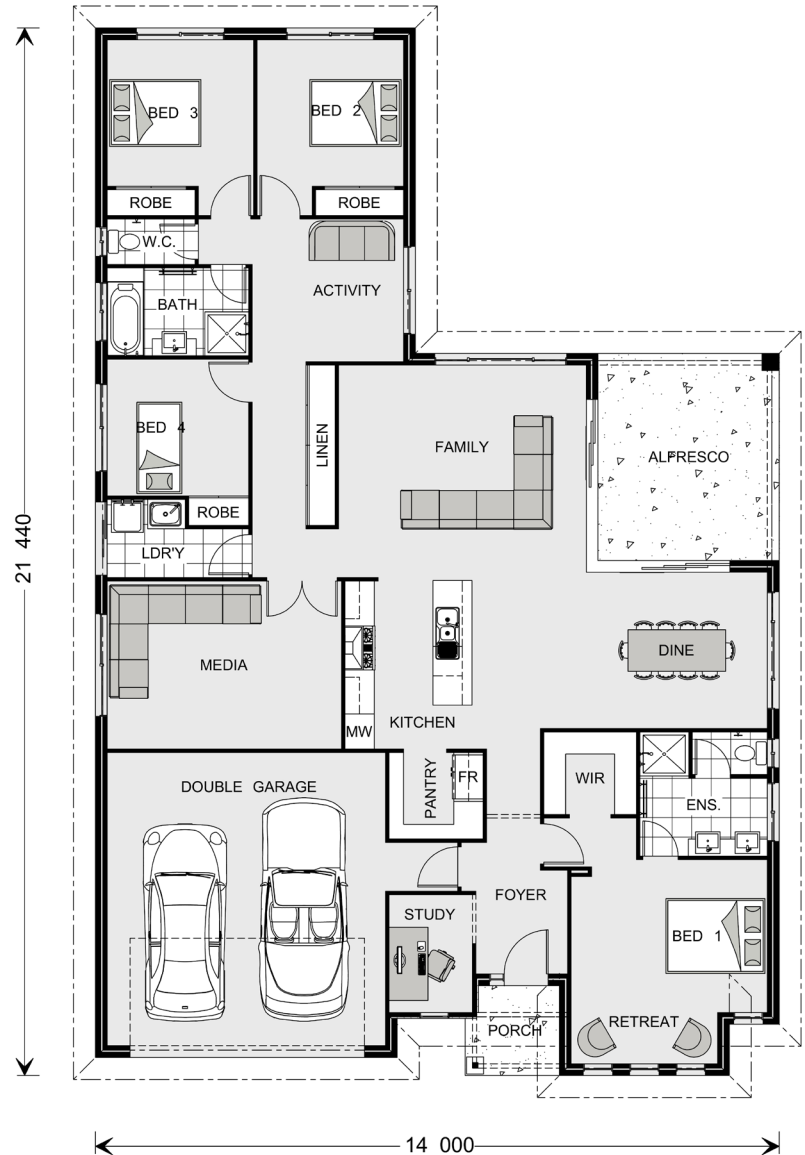
NOTES

Coolum 246.



FEATURES

- + Lifestyle alfresco
- + Spacious walk-in pantry
- + Media room
- + Study



The facades shown on this brochure are not representations of this floor plan.

SPECIFICATIONS

- Living:** 187.8 sqm
Garage: 38.7 sqm
Alfresco: 15.7 sqm
Porch: 3.4 sqm
Total: 245.6 sqm

TOTAL AREA

- Width:** 14.000 m
Length: 21.440 m

NOTES

Coolum 225.

4  2  2 

FEATURES

- + Study
- + Activity room
- + Walk-in pantry
- + Media room



The facades shown on this brochure are not representations of this floor plan.

SPECIFICATIONS

Living: 169.9 sqm
Garage: 39.0 sqm
Alfresco: 12.9 sqm
Porch: 3.0 sqm
Total: 224.8 sqm

TOTAL AREA

Width: 13.100 m
Length: 21.440 m

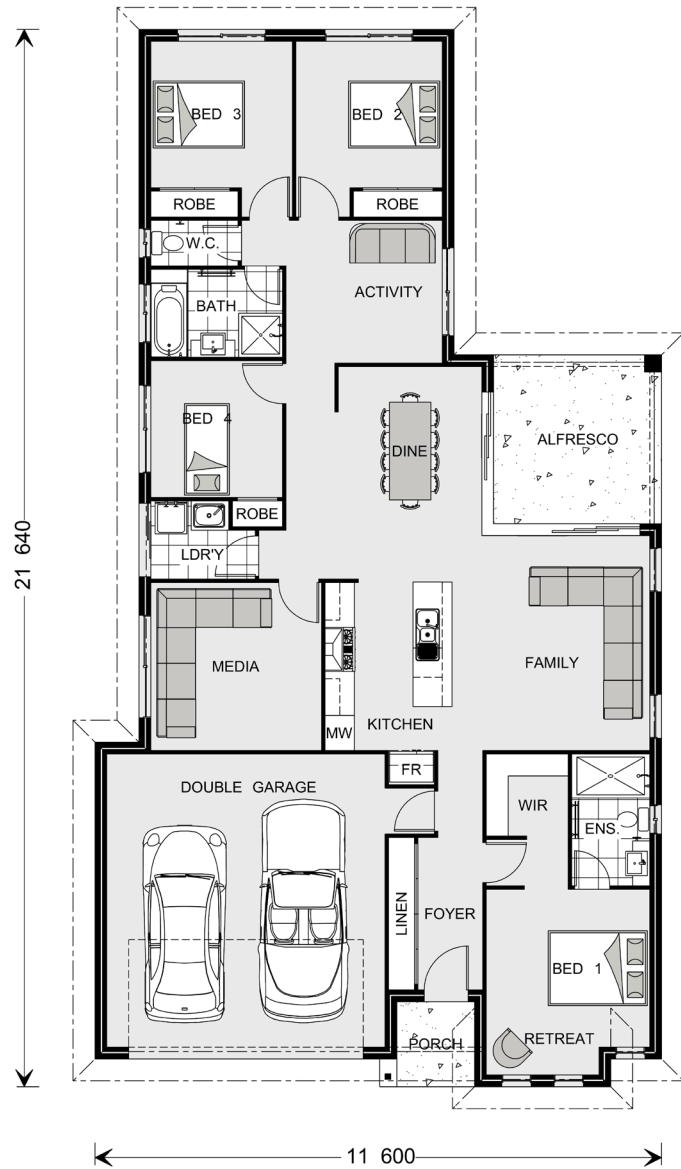
NOTES

Coolum 206.



FEATURES

- + Activity room
- + Open-plan living
- + Media room
- + Lifestyle alfresco



The facades shown on this brochure are not representations of this floor plan.

SPECIFICATIONS

- Living:** 152.3 sqm
Garage: 38.5 sq.m
Alfresco: 11.9 sqm
Porch: 3.0 sqm
Total: 205.7 sqm

TOTAL AREA

- Width:** 11.600 m
Length: 21.640 m

NOTES

**Locals always
at hand.**

Designing and building your ideal home is an exciting experience, and when you partner with professional and established builders – G.J. Gardner Homes, the journey will be fulfilling and rewarding.



Internal photographs are from different G.J. Gardner Homes to those featured in this brochure.

Contact us on **132 789**
or visit gjpgardner.com.au

G.J. Gardner. HOMES