

The Benowa.



Your trusted local builder.
Call 132 789 or visit gjgardner.com.au



Locally Owned



Australia's Best National Home Builder on Product Review



Fixed Price Contracts



Facts Up Front

BEACH



CLASSIC



EXECUTIVE



The Benowa designs combine three distinct zones to create a functional, spacious, flowing home with the added luxury of two separate outdoor living areas.

With the clever layout, there are endless possibilities that these designs feature. Escape to the large master suite offering an open bathroom, with double vanity, bath, WIR and room for a seating area. Relax in the media room or entertain in the central open living space with large kitchen including a butler's pantry and breakfast bar. Keep your productivity up with the huge study (or fifth bedroom option) conveniently placed at the front of the home. The Benowa is the solution to please the whole family, where everyone can gather together or escape to their own separate sanctuaries.



Key Features:

- + Huge, open master suite offers a tranquil oasis separate from the main living and kids zone.
- + Kitchen features a spacious, inviting layout with breakfast bar and butler's pantry to bring everyone together.
- + Large study/ 5th bedroom conveniently placed at the entrance for added privacy - perfect for working from home.
- + Space for the whole family with a media room, open plan living room and separate activity room.

Benowa 210.



Suits standard lot width:

12.5m +

Floor sizes - Resort Façade

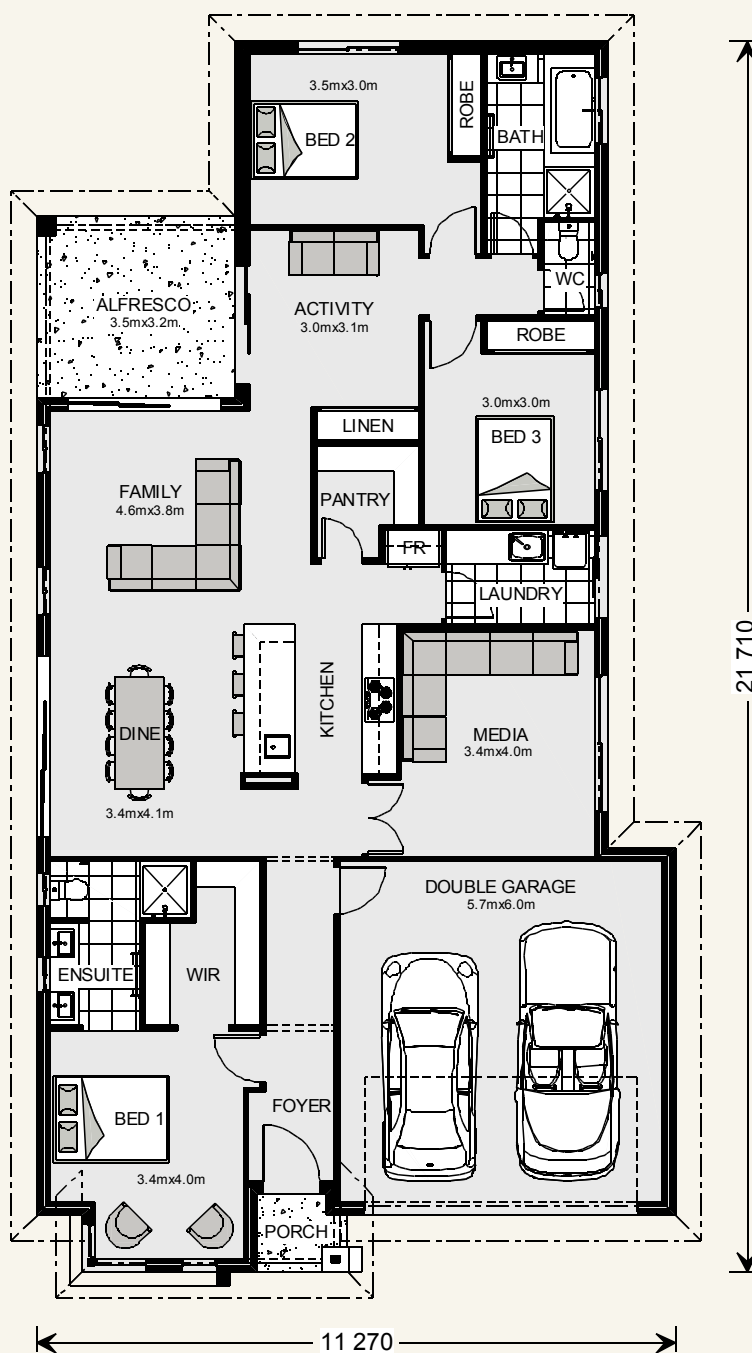
Living: 159.6 m²

Garage: 37.4 m²




Alfresco: 11.2 m²

Porch: 2.0 m²

Total: 210.2 m²



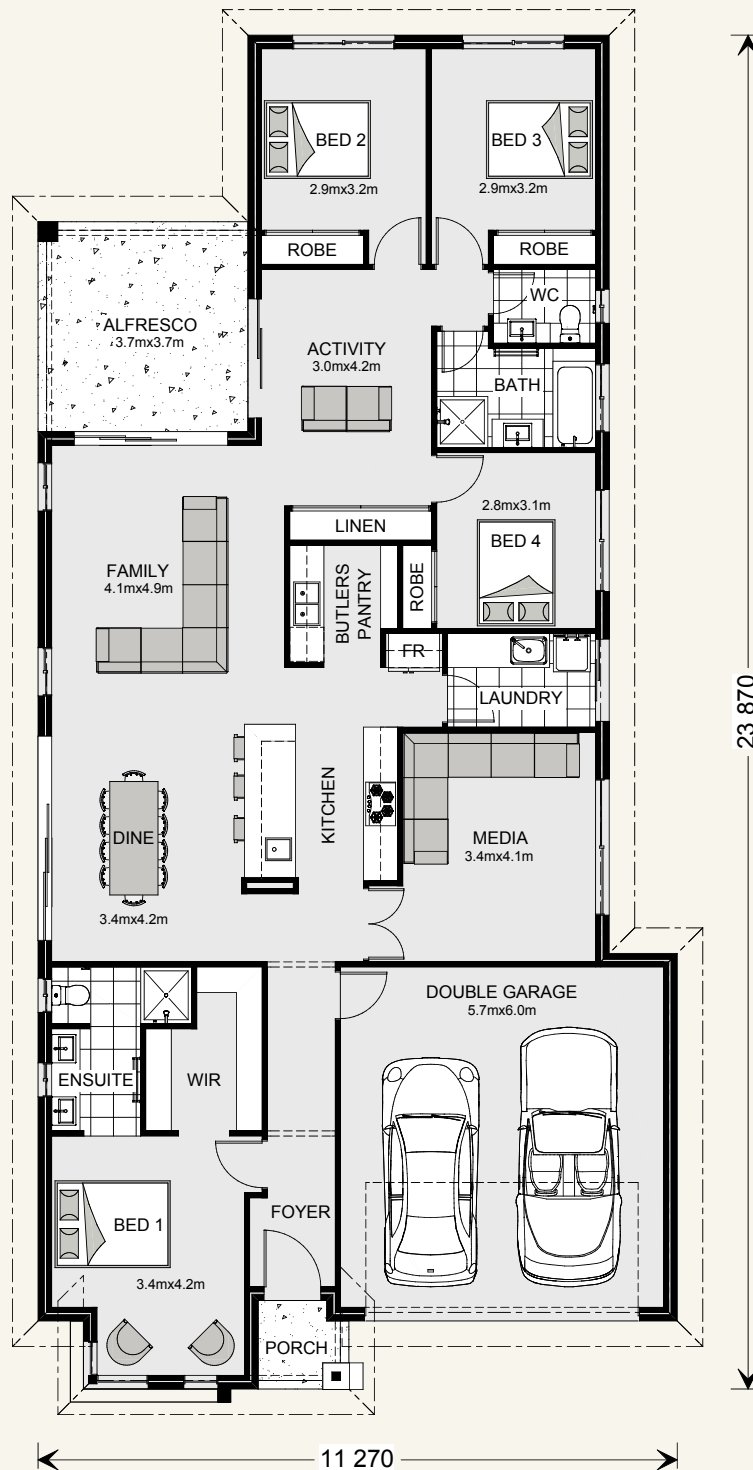
Benowa 230.

4  2.5  2 
 Suits standard lot width: 12.5m +

Floor sizes - Resort Façade

Living: 176.0 m²
 Garage: 37.4 m²

Alfresco: 13.7 m²
 Porch: 2.4 m²
Total: 229.5 m²



Benowa 260.

4  2.5  2 

Suits standard lot width: 14m +

Floor sizes - Resort Façade

Living: 197.7 m²

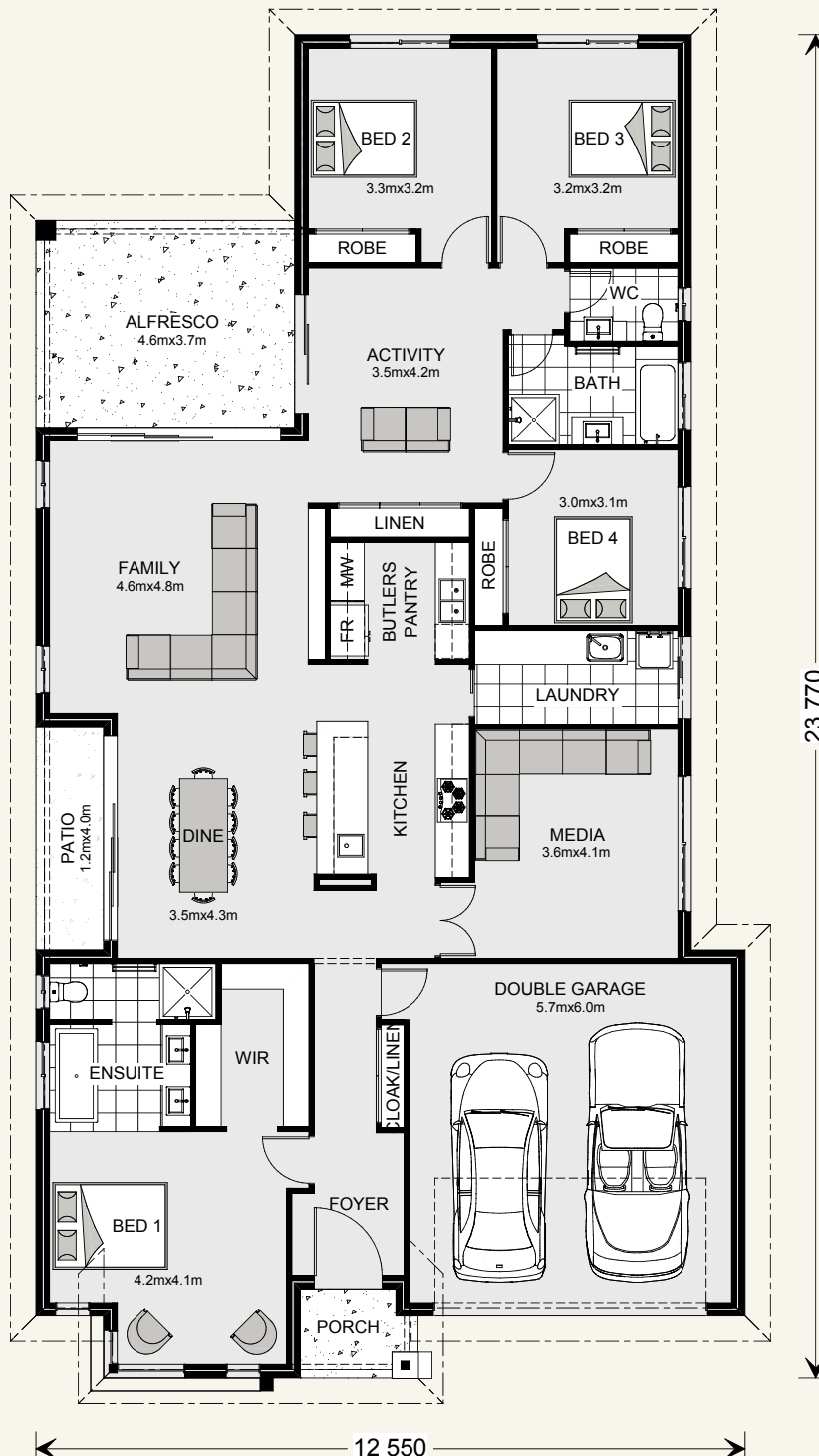
Garage: 37.9 m²

Alfresco: 16.8 m²




Porch: 3.1 m²

Patio: 4.7 m²

Total: 260.2 m²

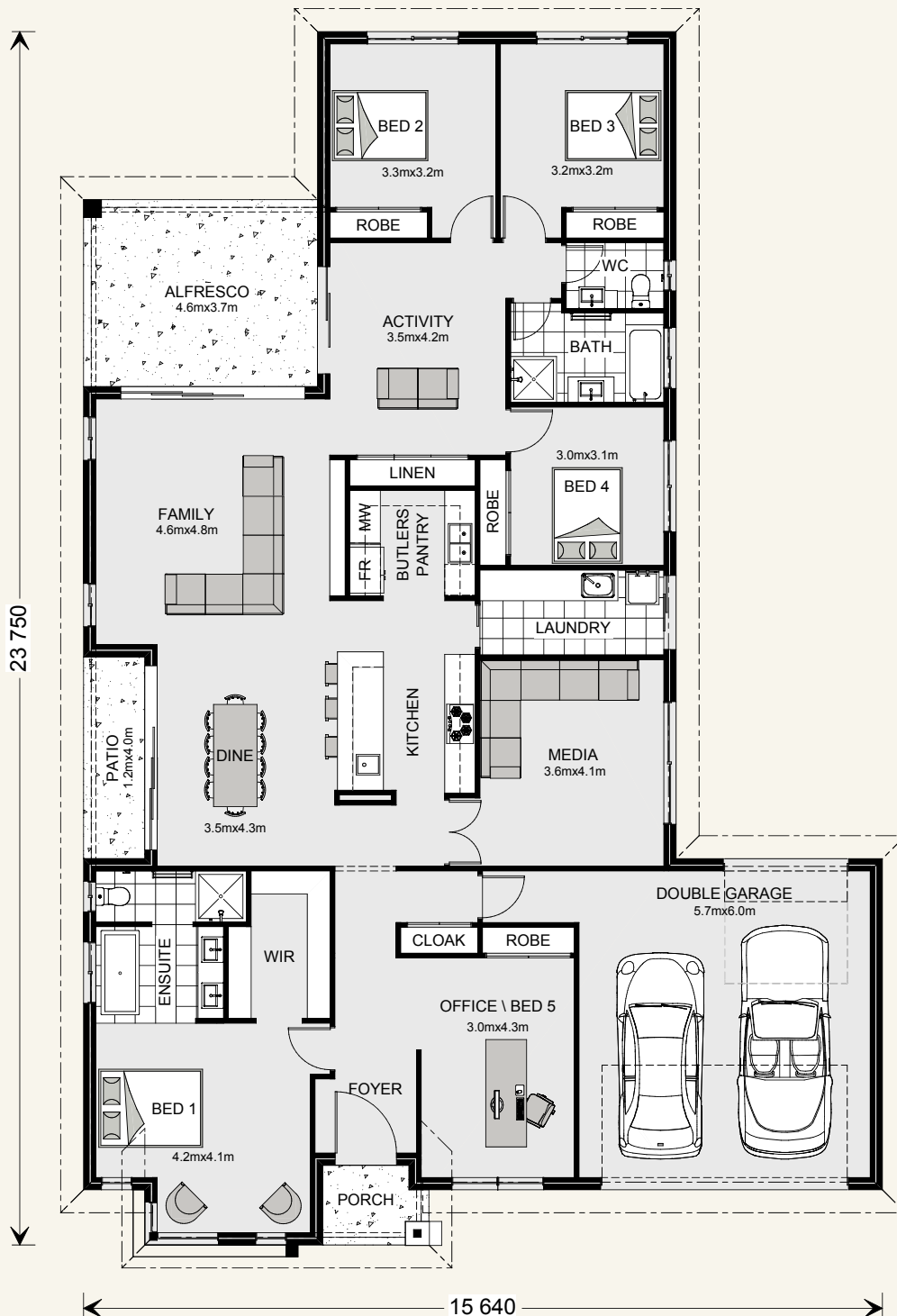


Benowa 280.

4  2.5  2 
 Suits standard lot width: 17m +

Floor sizes - Resort Façade

Living:	215.6 m ²	Porch:	3.1 m ²
Garage:	39.9 m ²	Patio:	4.7 m ²
Alfresco:	16.8 m ²	Total:	280.1 m²



Get in touch with an award-winning local builder today!

 132 789

 gjgardner.com.au



— WINNER —

**Australia's Best
National Home Builder
2016 and 2017**

PRODUCT  REVIEW
.COM.AU



*Based upon Australia Major Builder reviews received on productreview.com.au from 1 January 2016 – 30 November 2017. Images may depict fixtures, finishes and features not supplied by G.J. Gardner Homes. These items include planter boxes, retaining walls, water features, pergolas, screens and decorative landscaping items such as fencing and outdoor kitchens and barbecues.

Get in touch today!

Call 132 789 or visit gjgardner.com.au

G.J. Gardner. HOMES