

# The Beachmere.



Your trusted local.

G.J. Gardner. **HOMES**



**Allow yourself to imagine the lifestyle you've always wanted, in the home you deserve!**

Looking for a large family home that's packed with features and style? The new G.J. Gardner Homes Beachmere design range has your family's needs covered. Choose from four floorplans, each built around a central courtyard to capture plenty of natural light and breezes. There's a spacious master suite and a choice of three good-sized bedrooms for the kids. The Beachmere also boasts three separate indoor living areas, stylish kitchen with breakfast bar and butler's pantry, and a private alfresco area – perfect for entertaining. With a choice of six stylish facades, this range can be tailored to suit any location or lifestyle.

Images may depict fixtures, finishes and features not supplied by G.J. Gardner Homes. These items include planter boxes, retaining walls, water features, pergolas, screens and decorative landscaping items such as fencing and outdoor kitchens and barbecues.

**Features:**

- + Four bedrooms
- + Three living zones
- + Central courtyard
- + Lots of natural light and breezes

**Get in touch today!**  
Call 132 789 or visit [gjgardner.com.au](http://gjgardner.com.au)

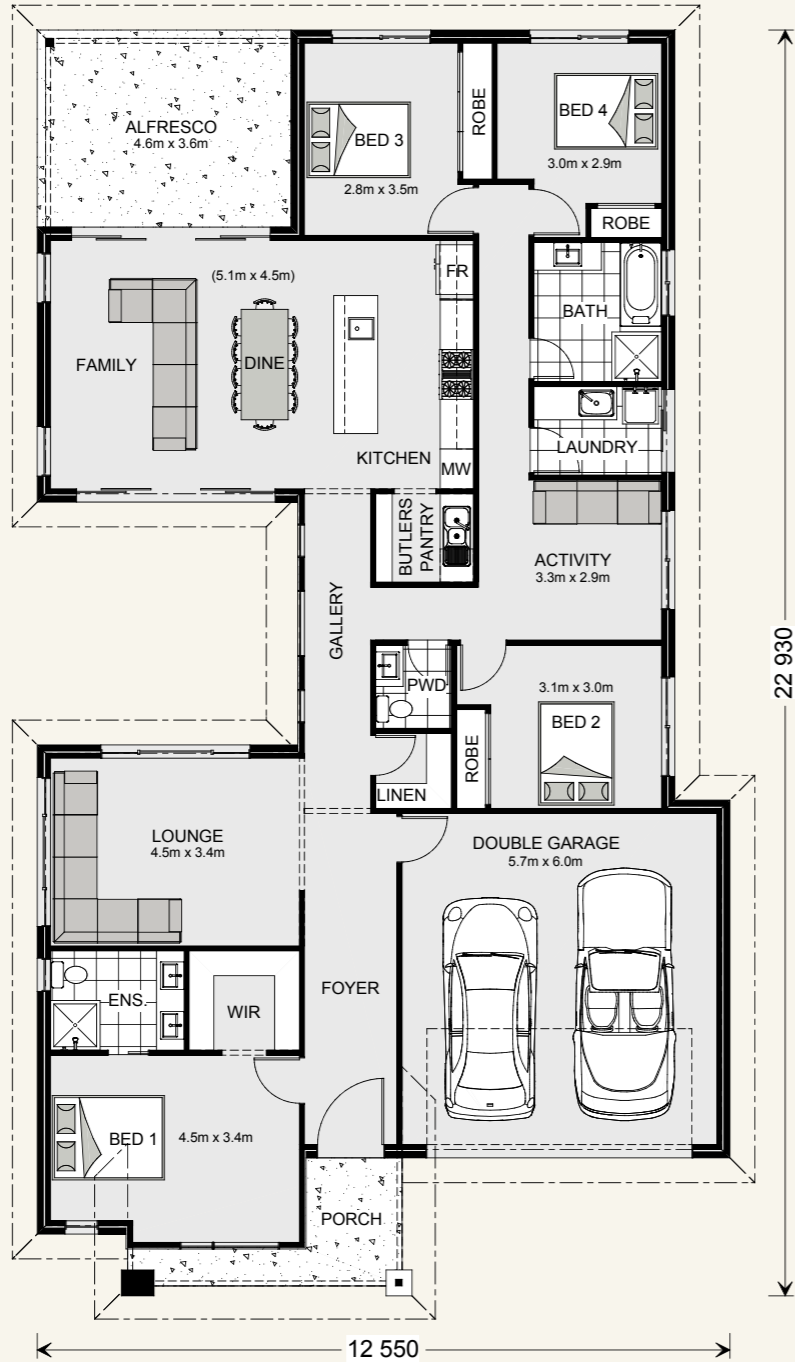
**G.J. Gardner. HOMES**

# Beachmere 235.



Suits corner & rural sites,  
or standard lot width: 14m +

Floor sizes - Resort Façade		Alfresco:	16.4 m <sup>2</sup>
Living:	174.8 m <sup>2</sup>	Portico:	6.3 m <sup>2</sup>
Garage:	37.9 m <sup>2</sup>	<b>Total:</b>	<b>235.4 m<sup>2</sup></b>

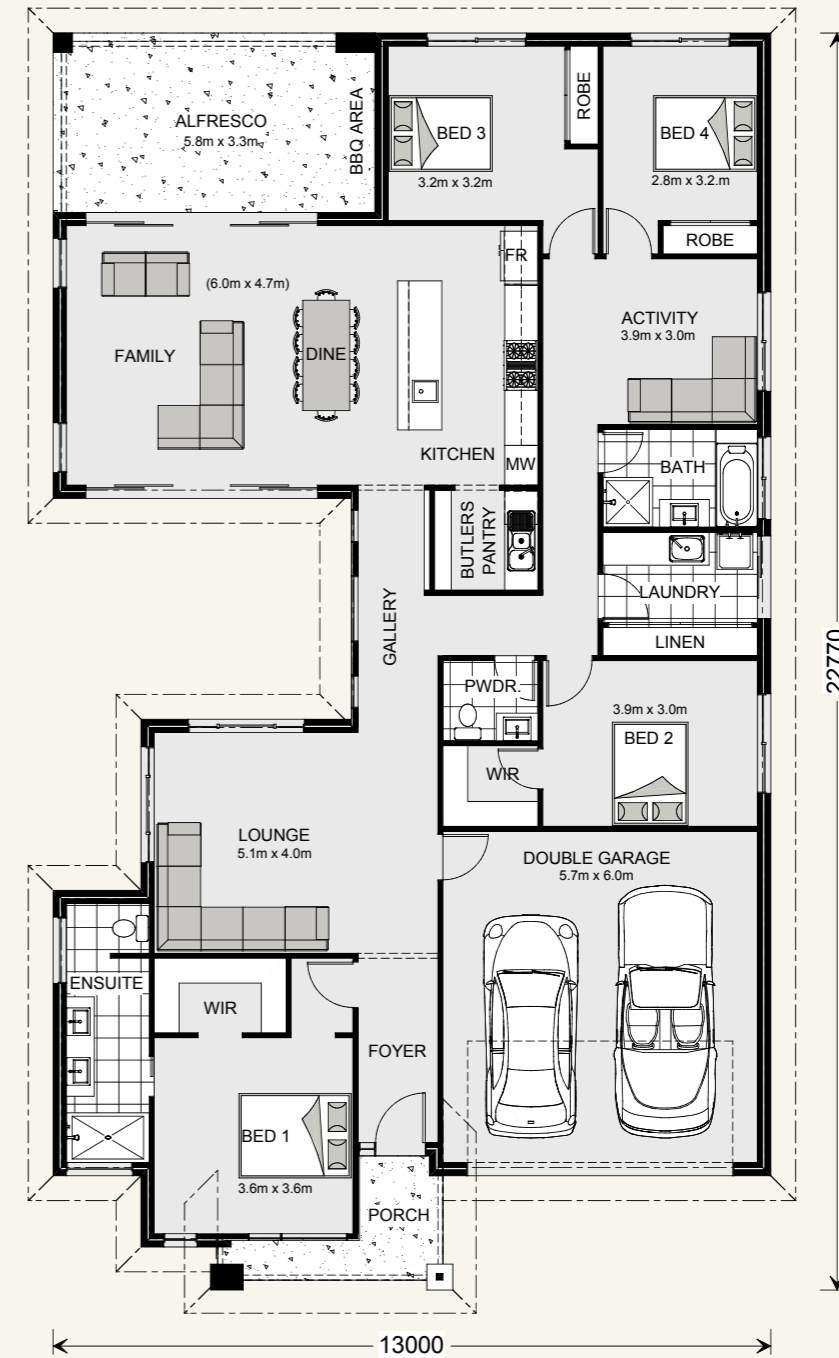


# Beachmere 252.



Suits corner & rural sites,  
or standard lot width: 15m +

Floor sizes - Resort Façade		Alfresco:	18.9 m <sup>2</sup>
Living:	190.5 m <sup>2</sup>	Portico:	5.3 m <sup>2</sup>
Garage:	37.2 m <sup>2</sup>	<b>Total:</b>	<b>251.9 m<sup>2</sup></b>

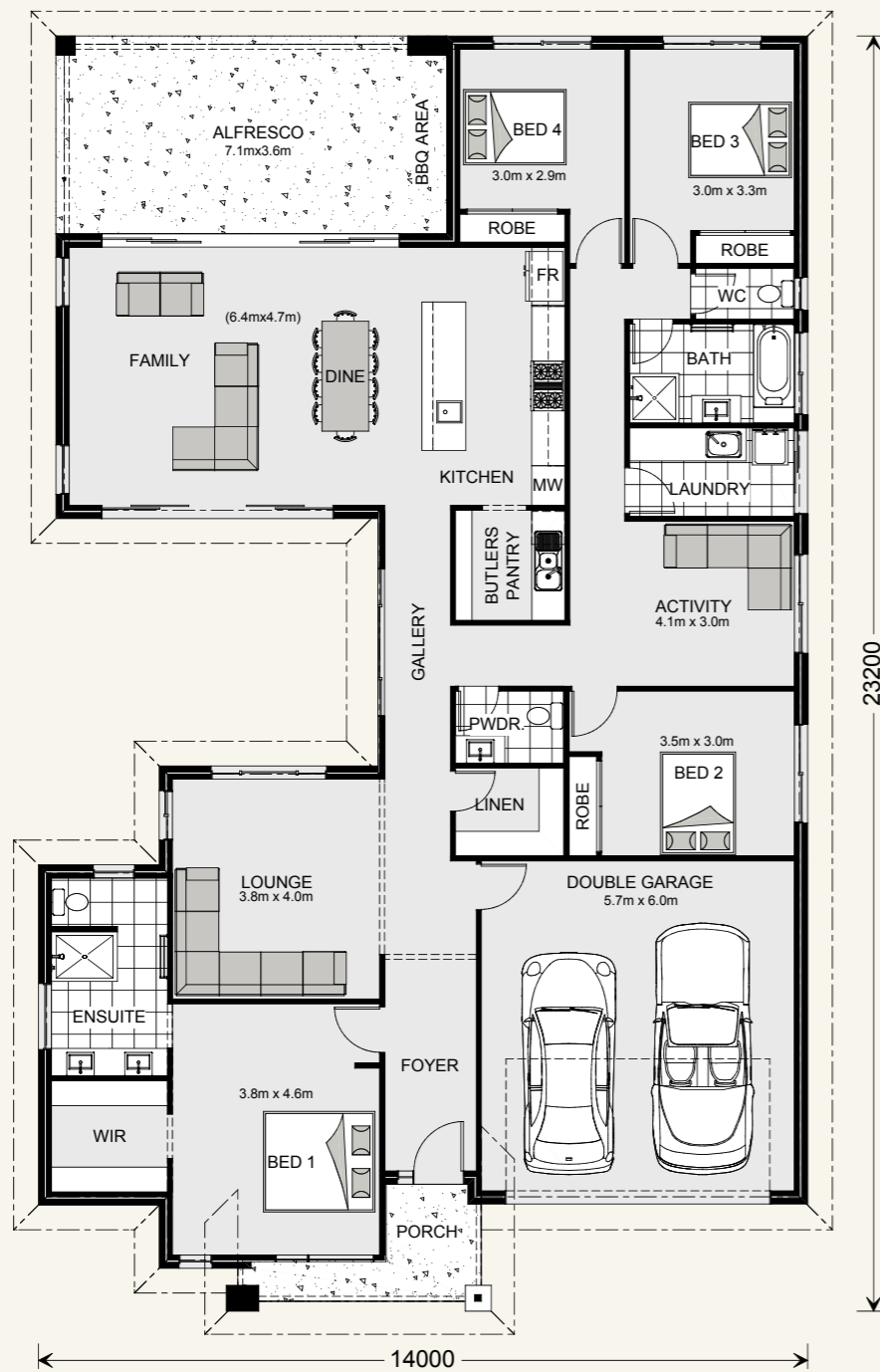


# Beachmere 272.



Suits corner & rural sites,  
or standard lot width: 16m +

Floor sizes - Resort Façade		Alfresco:	25.6 m <sup>2</sup>
Living:	203.9 m <sup>2</sup>	Portico:	5.6 m <sup>2</sup>
Garage:	37.2 m <sup>2</sup>	<b>Total:</b>	<b>272.3 m<sup>2</sup></b>

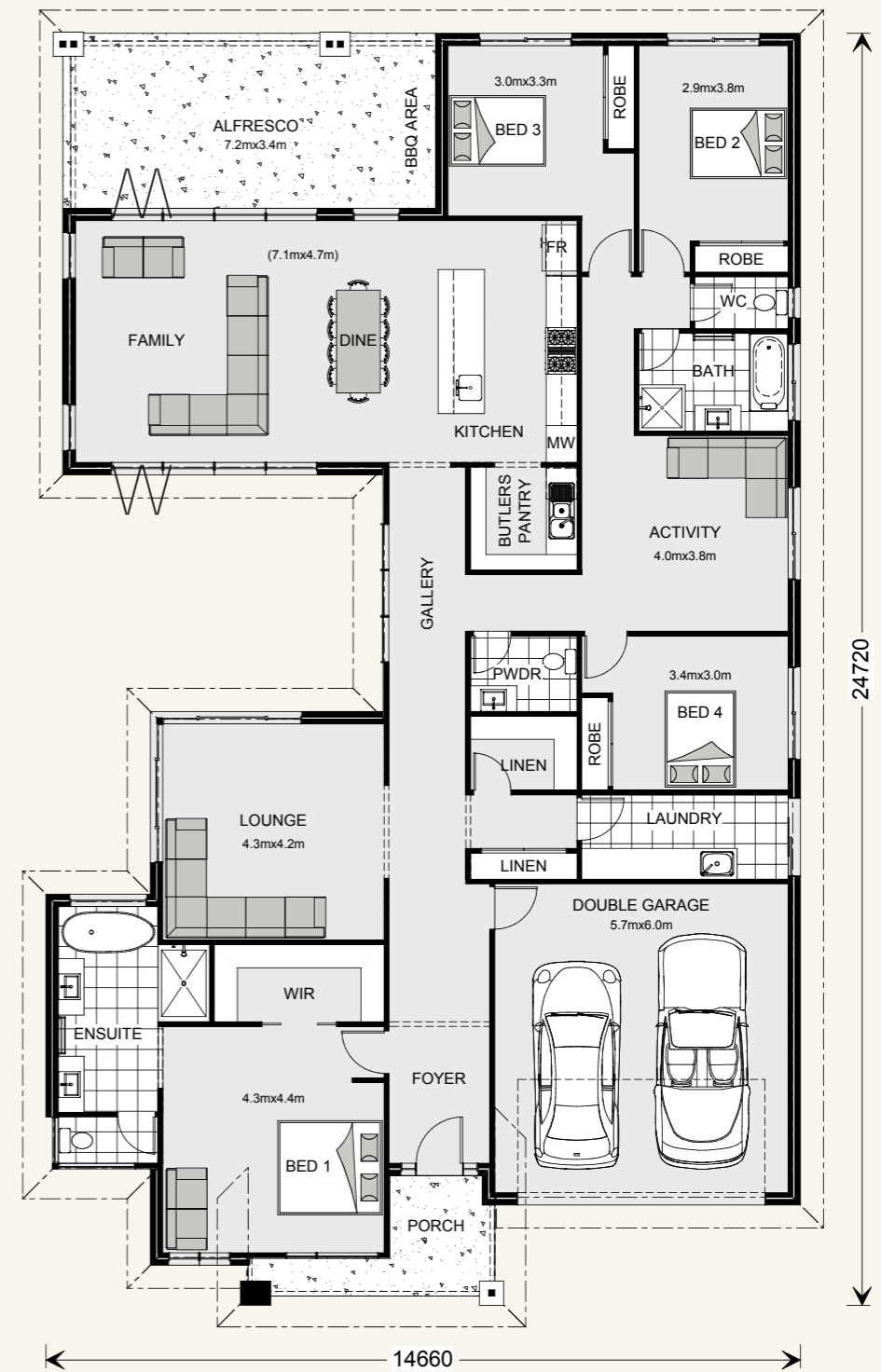


# Beachmere 303.



Suits corner & rural sites,  
or standard lot width: 17m +

Floor sizes - Resort Façade		Alfresco:	24.6 m <sup>2</sup>
Living:	234.2 m <sup>2</sup>	Portico:	6.7 m <sup>2</sup>
Garage:	37.2 m <sup>2</sup>	<b>Total:</b>	<b>302.7 m<sup>2</sup></b>





Your trusted local.

G.J. Gardner. **HOMES**